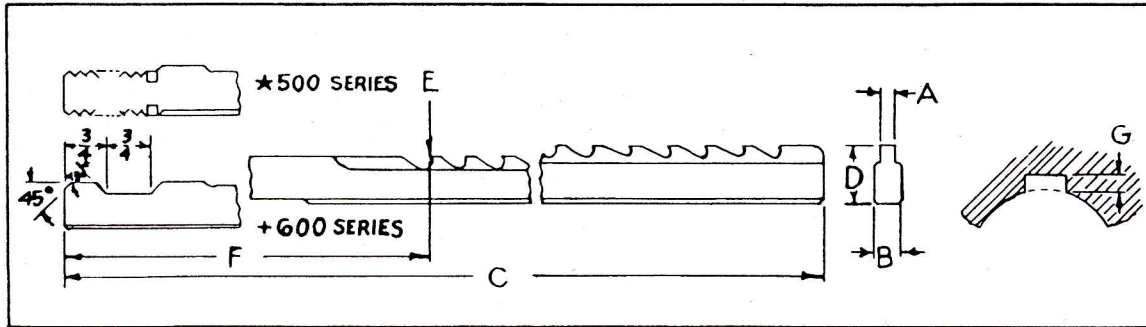


**We specialize in flats, form, keyway and carbide broaches**  
 We also furnish Rounds, Splines, Shapes, and all other Types of Broaching Tools.

in stock: **KEYWAY BROACHES—EAGLE STANDARD**



\* Designates Thread Type Shank

+ Designates Notched Type Shank

500 Series	600 Series	A			Min. Hole Size	Min. Length Cut **	Max. Length Cut	B +.0000 -.0005	C	D ±.0005	E	F	G	No. of Cuts	Thread Size
		Nom. Dim.	Decimal Dim.	Tolerance											
501	601	1/16	.0635	±.0002	3/8	3/8	1 1/4	.1552	20	.313	.271	7 13/16	.042	1	1/4-20
502	602	3/32	.0948	±.0002	7/16	1/2	1 1/2	.1865	24	.367	.309	8 1/4	.058	1	5/16-18
503	603	3/32	.0948	±.0002	5/8	5/8	2 1/2	.249	33	.491	.433	10	.058	1	3/8-16
504	604	1/8	.126	±.0002	1/2	1/2	1 1/2	.249	30	.438	.364	9	.074	1	3/8-16
505	605	1/8	.126	±.0002	7/8	3/4	2 1/2	.3115	36	.594	.520	10	.074	1	1/2-13
506	606	5/32	.1572	±.0002	19/32	1/2	1 1/2	.249	30	.525	.436	9	.089	1	3/8-16
507	607	5/32	.1572	±.0002	23/32	5/8	2 1/2	.3115	33	.625	.536	10	.089	1	1/2-13
508	608	3/16	.1885	±.0002	1 1/16	5/8	2 1/2	.374	36	.581	.476	10	.105	1	1/2-13
509	609	3/16	.1885	±.0002	15/16	1 1/16	3 1/2	.374	36	.796	.691	10 1 1/16	.105	1	1/2-13
510	610	7/32	.2198	±.0002	1 1/16	5/8	2 1/2	.374	33	.557	.437	10	.120	1	1/2-13
511	611	7/32	.2198	±.0002	15/16	1 1/16	3 1/2	.374	42	.813	.693	11 1/16	.120	1	1/2-13
512	612	1/4	.251	±.0002	1 1/16	5/8	2 1/2	.374	36	.612	.476	10	.136	1	1/2-13
513	613	1/4	.251	±.0002	1	1 1/16	4	.499	45	.877	.741	11 13/16	.136	1	5/8-11
514	614	1/4	.251	±.0002	17/16	7/8	6	.624	51	1.250	1.114	13 1/2	.136	1	3/4-10
515	615	9/32	.2828	±.0002	7/8	1 1/16	4	.499	42	.716	.564	11 5/8	.152	1	5/8-11
516	616	9/32	.2828	±.0002	1 1/4	7/8	6	.499	51	1.093	.941	13 1/2	.152	1	5/8-11
517	617	5/16	.314	±.0002	1	1 1/16	4	.499	45	.908	.741	11 13/16	.167	1	5/8-11
518	618	5/16	.314	±.0002	15/16	7/8	6	.499	51	1.158	.991	13 1/2	.167	1	5/8-11
519	619	3/8	.3765	±.0002	1 1/16	1 1/16	4	.499	45	.938	.739	11 13/16	.199	1	5/8-11
520	620	3/8	.3765	±.0002	15/16	7/8	6	.499	54	1.189	.990	13 1/2	.199	1	5/8-11
521	621	7/16	.439	±.0002	19/16	1 1/16	4	.624	48	1.390	1.160	12	.230	1	3/4-10
522	622	7/16	.439	±.0002	2	1	8	.624	48	1.611	1.496	15 5/8	.230	2	3/4-10
523	623	1/2	.5015	±.0002	1 1/2	1 1/16	4	.624	48	1.312	1.051	12	.261	1	3/4-10
524	624	1/2	.5015	±.0002	1 1/2	1	8	.624	48	1.377	1.246	16 1/2	.261	2	3/4-10
525	625	9/16	.5645	±.0003	1 3/4	1 1/16	4	.6865	54	1.438	1.146	11 13/16	.292	1	1-8
526	626	9/16	.5645	±.0003	15/8	1	8	.6865	51	1.391	1.245	16	.292	2	1-8
527	627	9/16	.5645	±.0003	2 1/4	1 1/8	12	.874	60	1.641	1.495	20	.292	2	1-8
528	628	5/8	.627	±.0003	1 7/8	1 1/16	4	.749	60	1.625	1.301	12 3/16	.324	1	1-8
529	629	5/8	.627	±.0003	2 1/2	1	8	.874	54	1.657	1.495	16 3/8	.324	2	1-8
530	630	5/8	.627	±.0003	2 1/4	1 1/8	12	.874	57	1.657	1.495	20	.324	2	1-8
531	631	3/4	.752	±.0003	1 7/8	1 1/16	4	.874	60	1.625	1.239	12 3/16	.386	1	1-8
532	632	3/4	.752	±.0003	2	1	8	.999	60	1.688	1.495	16 3/8	.386	2	1 1/4-7
533	633	3/4	.752	±.0003	2 1/4	1 1/8	12	.999	57	1.688	1.560	20	.386	3	1 1/4-7
534	634	7/8	.877	±.0003	2 1/4	1 1/16	4	1.124	63	1.875	1.426	12 3/8	.449	1	1 1/4-7
535	635	7/8	.877	±.0003	2 1/4	1	8	1.124	63	1.719	1.494	15 3/4	.449	2	1 1/4-7
536	636	7/8	.877	±.0003	2 1/4	1 1/8	12	1.124	63	1.719	1.569	20	.449	3	1 1/4-7
537	637	1	1.002	±.0003	2 1/4	5/8	2 1/2	1.249	63	1.750	1.239	10 1/2	.511	1	1 1/2-6
538	638	1	1.002	±.0003	2 1/4	7/8	6	1.249	63	1.750	1.494	14 1/4	.511	2	1 1/2-6
539	639	1	1.002	±.0003	2 1/4	1 1/8	12	1.249	60	1.750	1.580	20	.511	3	1 1/2-6

\*\* Minimum length of part recommended to prevent part from dropping in between teeth of broach.

MANUFACTURED AND STOCKED AT EAGLE TOOL COMPANY

WE GUARANTEE: Quality work, good service and prompt deliveries



**Eagle Tool Company**

EAGLE TOOL COMPANY 101 WOODWARD AVENUE  
169 EVERGREEN ROAD

IRON MOUNTAIN, MICHIGAN 49801  
OCONTO, WISCONSIN 54153

906/774-0284 FAX 906/774-0342  
414/834-5126